

## VARIO CLASSIC SMART LINE

CNC aggregate with angle adjustment from 0° to 100° via vernier scale and pivot arm for flexible use, even in compact machines

Machining capabilities: Drilling, routing, grinding, and light-duty sawing

Typical applications:

- Doors: Drilling of hardware holes at an angle (e.g., 93° or 97° Anuba hinges)
- Furniture making, exhibition stand construction, interior build-out: Clamex grooves in boards (90°) or at any angle
- Miter cuts at any angle (corner joints)
- Grinding of edges
- ...

### Technical Specifications

Max. input speed: 15,000 rpm

Max. output speed: 15,000 rpm

Gear ratio: 1 : 1

Max. torque: 20 Nm

Permissible operating temperature: max. 85°C

Positioning of torque arm with respect to tool: 360°

Machining angle: 0° - 100°

Angle display: Analog

Number of tool outputs: 1 / variable

Lubrication: Grease / Lifetime lubrication



### Tool connections

- ER 25 Mini with saw blade flange (K1)
- K2 saw blade flange
- Modular interface
- Other connections on request



### Machine connection:

ATEMAG aggregates are used on all CNC machines and robot systems. The machine connection is precisely matched to the technical requirements of the CNC machine or robot.

## SOFT GRINDER SMART LINE

Eccentric sander for sanding or polishing work on CNC machines or robots on surfaces and edges – also suitable for free-form surfaces.

Machining capabilities:

- Sanding of edges and surfaces – rough, intermediate, and finish sanding ...
- Grinding at an angle (miters), e.g., Swiss edge
- Polishing of various materials, e.g., Corian
- ...

Materials: Veneered boards, solid wood, MDF, mineral materials, etc.

### Technical Specifications

Max. input speed: 12,000 rpm

Max. output speed: 12,000 rpm

Gear ratio: 1:1

Permissible operating temperature: 85°C

Machining angle: 0°

Number of tool outputs: 1 / fixed

Max. floating capacity: 4 mm

Probing force: 1.2 - 2.4 kg

Eccentric stroke: 5



#### Tool connection

The sanding discs are available with diameters of

- ø76 mm
- ø125 mm
- ø150 mm and can be exchanged.



#### Machine connection:

The eccentric sanding unit is simply clamped into an existing tool holder or a CNC aggregate.



## DUO SMART LINE

CNC aggregate with two horizontal tool spindles – Also ideal for compact machines

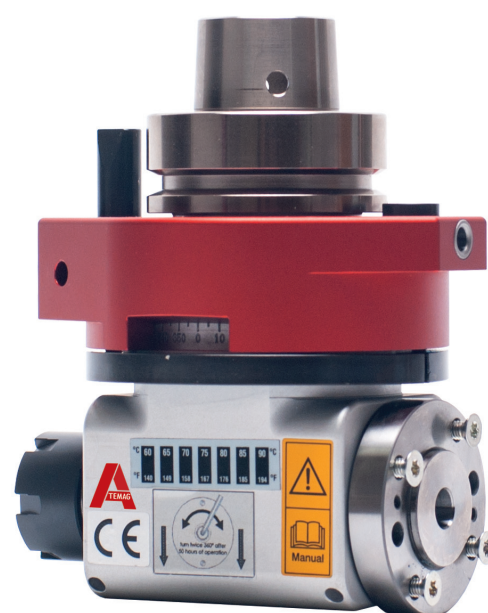
Machining capabilities: Drilling, routing, grinding, and light-duty sawing

Typical applications: Furniture making, exhibition stand construction, interior build-out

- Clamex grooves in boards (90°)
- Dowel hole drilling in edges
- Routing in edges or recesses
- Grinding of edges
- ...

### Technical Specifications

Max. input speed:	8,000 rpm
Max. output speed:	12,000 rpm
Gear ratio:	1 : 1.48
Max. torque:	15 Nm
Permissible operating temperature:	max. 85°C
Positioning of torque arm with respect to tool:	360°
Machining angle:	90°
Number of tool outputs:	2 / fixed
Lubrication:	Grease / Rota Lube – Lifetime lubrication



#### Tool connections

- ER 25
- S1 saw blade flange
- Other connections on request



#### Machine connection:

ATEMAG aggregates are used on all CNC machines and robot systems. The machine connection is precisely matched to the technical requirements of the CNC machine or robot.

## MONO FUNCTION LINE

Classic angle head with one horizontal tool output for challenging machining processes

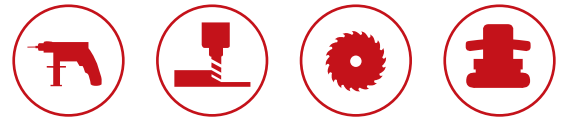
Machining capabilities: Drilling, routing, grinding, and sawing

Typical applications:

- Furniture making: Dowel hole drilling in edges, Clamex grooves in boards, sawing of back wall grooves
- Doors: Routing of recesses for connectors (TECTUS)
- Windows: Routing of joints, e.g., round mortise and tenon joints
- ...

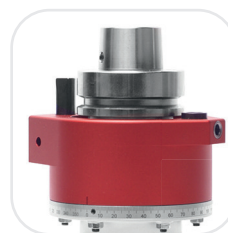
### Technical Specifications

Max. input speed:	10,000 rpm with Rota Lube: max. 12,100 rpm
Max. output speed:	15,000 rpm with Rota Lube: max. 18,000 rpm
Gear ratio:	1 : 1.48
Max. torque:	20 Nm
Permissible operating temperature:	max. 85°C
Positioning of torque arm with respect to tool:	360°
Machining angle:	90°
Number of tool outputs:	1 / fixed
Lubrication:	Grease / Rota Lube – Lifetime lubrication



### Tool connections

- ER 25
- ER 32
- S1 saw blade flange
- Modular interface
- Other connections on request



### Machine connection:

ATEMAG aggregates are used on all CNC machines and robot systems. The machine connection is precisely matched to the technical requirements of the CNC machine or robot.



## MONO FIX FUNCTION LINE

MONO FUNCTION LINE with customized angle and one tool output –  
Ideal for mitering

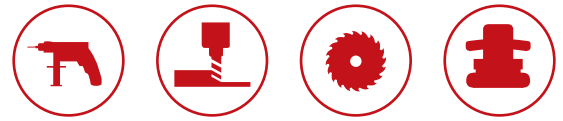
Machining capabilities: Drilling, routing, grinding, and sawing

Typical applications:

- Doors: Drilling of hardware holes at an angle (e.g., 93° or 97° Anuba hinges)
- Clamex grooves
- Sawing of miter cuts at 45° for corner joints
- Routing of holes for miter joint connectors
- ...

### Technical Specifications

Max. input speed:	15,000 rpm
Max. output speed:	15,000 rpm
Gear ratio:	1 : 1
Max. torque:	20 Nm
Permissible operating temperature:	max. 85°C
Positioning of torque arm with respect to tool:	360°
Machining angle:	0-100°
Number of tool outputs:	1 / fixed
Lubrication:	Grease / Lifetime lubrication



#### Tool connections:

- ER 25 and saw blade flange (K1)
- K2 saw blade flange
- Modular interface
- Other connections on request



#### Machine connection:

ATEMAG aggregates are used on all CNC machines and robot systems. The machine connection is precisely matched to the technical requirements of the CNC machine or robot.

## DUO FUNCTION LINE

Angle head with two horizontal tool outputs for flexible and challenging machining processes with no tool change

Machining capabilities: Drilling, routing, grinding, and light-duty sawing

Typical applications:

- Time savings in the process and space savings in the tool changer (even with 5 axes)
- Furniture making: Dowel hole drilling in edges, Clamex grooves in boards, sawing of back wall grooves
- Doors: Routing of recesses for connectors (TECTUS);
- Windows: Routing of joints, e.g., round mortise and tenon joints

### Technical Specifications

Max. input speed:	10,000 rpm With Rota Lube: max. 12,100 rpm
Max. output speed:	15,000 rpm With Rota Lube: max. 18,000 rpm
Gear ratio:	1 : 1.48
Max. torque:	20 Nm
Permissible operating temperature:	max. 85°C
Positioning of torque arm with respect to tool:	360°
Machining angle:	90°
Number of tool outputs:	2 / fixed
Lubrication:	Grease / Rota Lube – Lifetime lubrication



Tool connections:

- ER 25
- ER 32
- S1 saw blade flange
- Modular interface
- Other connections on request



Machine connection:

ATEMAG aggregates are used on all CNC machines and robot systems. The machine connection is precisely matched to the technical requirements of the CNC machine or robot.

## SOLUTIONS FOR CLAMEX CONNECTORS

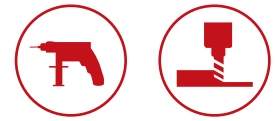
Vertical Clamex groove routing in surfaces with gentle machining using a standard ATEMAG aggregate – all-in-one system solution

The MONO, DUO, and QUATTRO standard aggregates allow the Clamex connector to be positioned at any point on the board thanks to the vertical position of the Clamex groove side milling cutter and the spindle design of the aggregate.

For diagonal positioning of the groove, the MONO FIX FUNCTION LINE (fixed angle) or the VARIO (variable angle) can be used. The grooving cutter tool of the respective aggregate is plunged into the surface during machining and moved sideways at a precise depth.

### Technical Specifications

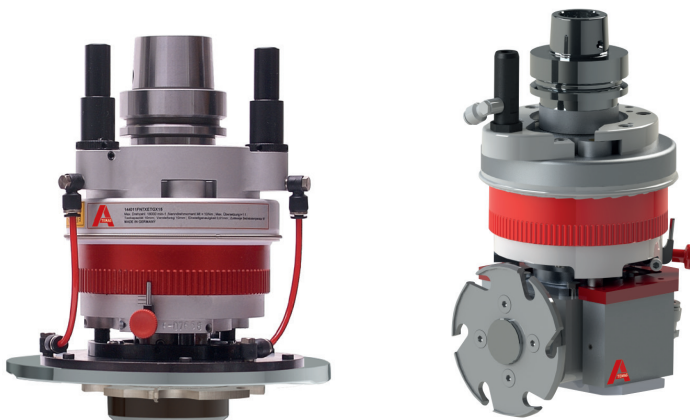
Max. input speed:	max. 10,000 rpm with Rota Lube: max. 12,100 rpm
Max. output speed:	max. 15,000 rpm with Rota Lube: max. 18,000 rpm
Gear ratio:	1 : 1.48
Max. torque:	20 Nm
Permissible operating temperature:	max. 85°C
Positioning of torque arm with respect to tool:	360°
Machining angle:	90°
Number of tool outputs:	2 / fixed
Lubrication:	Grease / Rota Lube – Lifetime lubrication



## Floating Aggregate for Clamex Connectors

Grooves for Clamex connectors can also be routed into edges and surfaces of workpieces that have thickness fluctuations.

The **SOFT TOUCH PRO FUNCTION LINE**, which is equipped with a special probe, is suitable for this type of machining.



On request, we can supply any aggregate used for Clamex groove routing with the Clamex routing tool in a system. Take advantage of our all-in-one system solution and request a quote for your Clamex system solution.

## QUATTRO FUNCTION LINE

Angle head with four horizontal tool outputs for flexible and challenging machining processes with no tool change

Machining capabilities: Drilling, routing, grinding, and sawing

Typical applications:

- 5-axis: Maximum time savings in the process and space savings in the tool changer
- Furniture making: Dowel hole drilling in edges, Clamex grooves in boards, sawing of back wall grooves
- Doors: Routing of recesses for connectors (TECTUS);
- Windows: Routing of joints, e.g., round mortise and tenon joints

### Technical Specifications

Max. input speed:	10,000 rpm with Rota Lube: max. 12,100 rpm
Max. output speed:	15,000 rpm with Rota Lube: max. 18,000 rpm
Gear ratio:	1 : 1.48
Max. torque:	20 Nm
Permissible operating temperature:	max. 85°C
Positioning of torque arm with respect to tool:	360°
Machining angle:	90°
Number of tool outputs:	4 / fixed
Lubrication:	Grease / Rota Lube – Lifetime lubrication



Tool connections:

- ER 25
- ER 32
- S1 saw blade flange
- Modular interface
- Other connections on request



Machine connection:

ATEMAG aggregates are used on all CNC machines and robot systems. The machine connection is precisely matched to the technical requirements of the CNC machine or robot.

## VARIO VISO FUNCTION LINE

Machining aggregate with simple angle adjustment (0° to 100°) via fine gear and digital display – Fast positioning at 90°, 45°, and 0°

Machining capabilities: Drilling, routing, grinding, and sawing

Typical applications:

- Doors: Drilling of hardware holes at an angle (e.g., 93° or 97° Anuba hinges)
- Furniture making, exhibition stand construction, interior build-out:  
Clamex grooves in miters
- Miter cuts at any angle (corner joints)
- Grinding of edges

• ...

Technical Specifications

Max. input speed: 15,000 rpm

Max. output speed: 15,000 rpm

Gear ratio: 1 : 1

Max. torque: 20 Nm

Permissible operating temperature: max. 85°C

Positioning of torque arm with respect to tool: 360°

Machining angle: 0 - 100°

Angle display: Digital

Number of tool outputs: 1 / variable

Lubrication: Grease / Lifetime lubrication



Tool connections:

- ER 25 Mini and saw blade flange (K1)
- K2 saw blade flange
- Modular interface
- Other connections on request



Machine connection:

ATEMAG aggregates are used on all CNC machines and robot systems. The machine connection is precisely matched to the technical requirements of the CNC machine or robot.



## EXTRA FUNCTION LINE

Lockset recess aggregate with two horizontal tool outputs specifically for lockset recess routing or baluster hole drilling

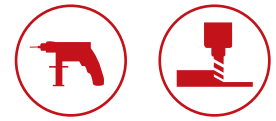
The design permits the use of long tools with a small interference circle diameter – optionally also with a guide rail for tool stabilization for deep drilling.

Typical applications:

- Doors: Lockset recess routing and forend routing in edges
- Stairs: Baluster hole drilling in stringer or railing
- Furniture making: Dowel hole drilling and drilling of holes for insert boards
- ...

### Technical Specifications

Max. input speed:	10,000 rpm with Rota Lube: max. 12,100 rpm
Max. output speed:	15,000 rpm with Rota Lube: max. 18,000 rpm
Gear ratio:	1 : 1.48
Max. torque:	20 Nm
Permissible operating temperature:	max. 85°C
Positioning of torque arm with respect to tool:	4 x 90°
Machining angle:	90°
Number of tool outputs:	2 / fixed
Lubrication:	Grease / Rota Lube – Lifetime lubrication



#### Tool connection

- ER 16
- ER 32
- Modular interface
- Weldon
- Other connections on request



#### Machine connection:

ATEMAG aggregates are used on all CNC machines and robot systems. The machine connection is precisely matched to the technical requirements of the CNC machine or robot.

## EXTRA PLUS FUNCTION LINE

Lockset recess aggregate with high-speed mechanism for getting the work done in record time.

The high-speed mechanism in the oscillating production process guarantees a time savings of at least 50% compared with conventional lockset recess milling.

Typical applications:

Industrial door production on CNC machines for lockset recess and forend machining



### Technical Specifications

Max. input speed: 10,000 rpm

Max. output speed: 15,000 rpm

Gear ratio: 1 : 1.48

Max. torque: 20 Nm

Permissible operating temperature: max. 85°C

Positioning of torque arm with respect to tool: 4 x 90°

Machining angle: 90°

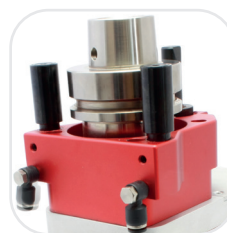
Number of tool outputs: 2 / fixed

Lubrication: Grease / Rota Lube – Lifetime lubrication



Tool connections:

- ER32
- ER16



Machine connection:

ATEMAG aggregates are used on all CNC machines and robot systems. The machine connection is precisely matched to the technical requirements of the CNC machine or robot.

## EXTRA 2 FUNCTION LINE

Corner notching / underside machining on 5-axis machines  
in tight spaces without board

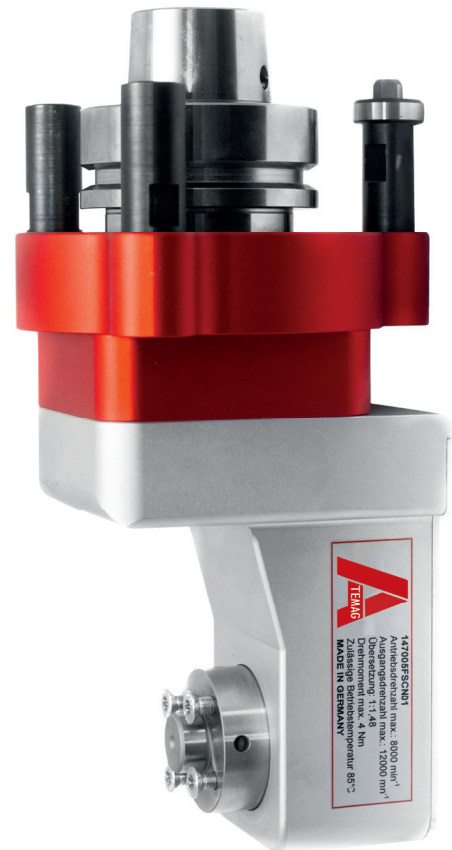
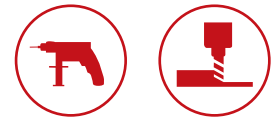
Machining capabilities: Drilling, routing, sawing, and grinding

Typical applications:

- Windows: Underside routing of sealing grooves
- Doors: Underside drilling (standard and concealed hinges),  
notching of internal corners
- Furniture making and kitchens: Concealed hinge cup hole drilling / routing for hinges
- ...

### Technical Specifications

Max. input speed:	8,000 rpm
Max. output speed:	12,100 rpm
Gear ratio:	1 : 1.48
Max. torque:	4 Nm
Permissible operating temperature:	max. 85°C
Positioning of torque arm with respect to tool:	4 x 90°
Machining angle:	90°
Number of tool outputs:	1 / fixed
Lubrication:	Grease / Lifetime lubrication



#### Tool connection

- Spindle for corner notching tool
- ER32
- ER 20 internal
- Other connections on request



#### Machine connection:

ATEMAG aggregates are used on all CNC machines and robot systems. The machine connection is precisely matched to the technical requirements of the CNC machine or robot.

## SOTTO FUNCTION LINE

Underside aggregate for routing and drilling on cantilever machines without board reclamping – Precise and efficient

Machining capabilities: Drilling and routing

Typical applications:

- Windows: Underside routing of sealing grooves
- Doors: Underside drilling (standard and concealed hinges)
- Furniture making + kitchens: Concealed hinge cup hole drilling or routing for hinges
- ...

### Technical Specifications

Max. input speed:	15,000 rpm
Max. output speed:	15,000 rpm
Gear ratio:	1 : 1
Max. torque:	5 Nm
Permissible operating temperature:	max. 85°C
Positioning of torque arm with respect to tool:	4 x 90°
Machining angle:	180°
Number of tool outputs:	1 / fixed
Lubrication:	Grease / Lifetime lubrication



Tool connections:

- ER 25 internal
- Weldon
- Other connections on request



Machine connection:

ATEMAG aggregates are used on all CNC machines and robot systems. The machine connection is precisely matched to the technical requirements of the CNC machine or robot.

## SOFT TOUCH PRO FUNCTION LINE

Floating aggregate for constant and defined machining depth despite clamping unevenness and thickness fluctuations

Typical applications:

- Facade installation: Routing of V-grooves in ALUCOBOND
- Stairs: Edge machining of stair treads
- Furniture making: Clamex P connectors in edges
- Kitchens: Routing of recesses in countertops / doors: Decorative grooves
- Formwork installation: Drilling at a defined depth
- Automotive and aerospace: Edge machining of molded parts and countersinking

### Technical Specifications

Max. input speed:	18,000 rpm
Max. output speed:	18,000 rpm
Gear ratio:	1 : 1
Max. torque:	10 Nm
Permissible operating temperature:	max. 85°C
Machining angle:	0°
Number of tool outputs:	1 / fixed
Lubrication:	Grease / Lifetime lubrication
Floating capacity:	10 mm
Adjustment range:	10 mm
Setting precision:	0.01 mm
Probing direction:	Axial



**Routing, drilling, grinding, profiling, and sawing with surface probing (vertical and horizontal)**

Diverse machining possibilities thanks to modular system allowing individual adaptation to different requirements.



Tool connection:

- Modular interface
- Other connections on request



Machine connection:

ATEMAG aggregates are used on all CNC machines and robot systems. The machine connection is precisely matched to the technical requirements of the CNC machine or robot.



## SOFT TOUCH PRO HORI FUNCTION LINE

90° gearbox w. surface probing for groove sawing with copying unit from SOFT TOUCH PRO (p. 56) for precise and accurate groove depths

Fast feed rate due to high cutting speed

Machining capabilities: Sawing

Typical applications:

- Doors: All types of decorative grooves
- Facades: V-grooves

### Technical Specifications

Max. input speed:	8,100 rpm
Max. output speed:	12,000 rpm
Gear ratio:	1 : 1.48
Max. torque:	10 Nm
Permissible operating temperature:	max. 85°C
Floating capacity:	10 mm
Adjustment range:	7 mm
Setting precision:	0.01 mm
Machining angle:	90°
Number of tool outputs:	1 / fixed
Lubrication:	Grease / Lifetime lubrication



#### Tool connections:

- ATlock
- S1 saw blade flange
- Modular interface
- Other connections on request



#### Machine connection:

ATEMAG aggregates are used on all CNC machines and robot systems. The machine connection is precisely matched to the technical requirements of the CNC machine or robot.

## SOFT TOUCH 360° MONO FUNCTION LINE

Floating aggregate for defined edge machining of contoured parts on 5-axis machines or robot systems

Typical applications:

- Musical instruments: Edge machining of guitar bodies
- Furniture making: Edge machining of contoured shapes  
Routing of glued-on edge banding flush with board on 5-axis machines
- Industrial robot cells: End-of-arm solution for edge machining of GFRP/CFRP parts after pressing
- ...

### Technical Specifications

Max. input speed:	12,000 rpm
Max. output speed:	12,000 rpm
Gear ratio:	1 : 1
Max. torque:	10 Nm
Permissible operating temperature:	max. 85°C
Machining angle:	0°
Number of tool outputs:	1 / fixed
Lubrication:	Grease / Lifetime lubrication
Probing direction:	Radial
Floating capacity:	5 mm



Copying function for compensating for shape and position tolerances in radial axis direction of molded parts, e.g., chamfers and radii, or for deburring.



Tool connections:

- Modular interface
- Other connections on request



Machine connection:

ATEMAG aggregates are used on all CNC machines and robot systems. The machine connection is precisely matched to the technical requirements of the CNC machine or robot.

## SOFT TOUCH 360° DUO FUNCTION LINE

With two tool outputs

Furniture making and interior build-out:  
Routing of glued-on edge banding flush with board on 4-axis machines



## SOFT TOUCH ONE FUNCTION LINE

Floating aggregate for constant and defined machining depth despite clamping unevenness and thickness fluctuations

Typical applications:

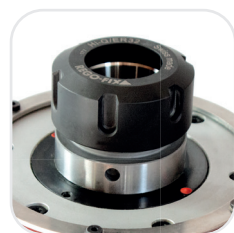
- Facade installation: Routing of V-grooves in ALUCOBOND
- Stairs: Edge machining of stair treads
- Doors: Decorative grooves
- Kitchens: Routing of recesses in countertops
- Formwork installation: Drilling at a defined depth
- Automotive and aerospace: Edge machining of molded parts and countersinking

### Technical Specifications

Max. input speed:	18,000 rpm
Max. output speed:	18,000 rpm
Gear ratio:	1 : 1
Max. torque:	10 Nm
Permissible operating temperature:	max. 85°C
Machining angle:	0°
Number of tool outputs:	1 / fixed
Lubrication:	Grease / Lifetime lubrication
Floating capacity:	10 mm
Adjustment range:	70 mm
Setting precision:	0.01 mm
Probing direction:	Axial



Routing – Drilling – Sawing (horiz.) – Grinding for standard applications



Tool connections:

- ER 32
- Modular interface
- Other connections on request



Machine connection:

ATEMAG aggregates are used on all CNC machines and robot systems. The machine connection is precisely matched to the technical requirements of the CNC machine or robot.

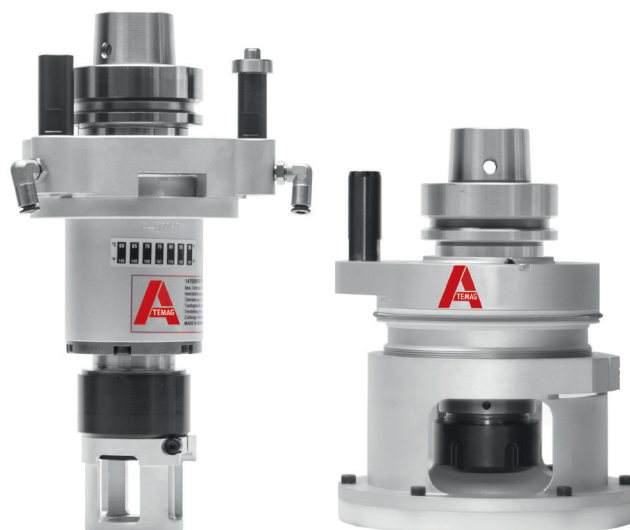
## SOFT TOUCH COMPACT

Floating aggregate for constant and defined machining depth

Typical applications are the same as those of the SOFT TOUCH PRO FUNCTION LINE and the SOFT TOUCH ONE FUNCTION LINE, but are designed for use when space is limited due to the requirements of the application or the machine characteristics. The height or diameter is adapted.

### Technical Specifications

Max. input speed:	18,000 rpm
Max. output speed:	18,000 rpm
Gear ratio:	1 : 1
Max. torque:	10 Nm
Permissible operating temperature:	max. 85°C
Number of tool outputs:	1 / fixed
Floating capacity:	6 mm
Adjustment range:	4 mm
Setting precision:	0.01 mm
Lubrication:	Grease / Lifetime lubrication



## SOFT TOUCH 3D FUNCTION LINE

Floating aggregate with radial and axial probing

Extension of the SOFT TOUCH 360° FUNCTION LINE floating aggregate (p. 58) with additional axial probing.

### Technical Specifications

Max. input speed:	12,000 rpm
Max. output speed:	12,000 rpm
Gear ratio:	1 : 1
Max. torque:	10 Nm
Permissible operating temperature:	max. 85°C
Floating capacity:	axial: 7.5 mm / radial 5 mm
Machining angle:	0°
Adjustment range:	axial: 5 mm
Number of tool outputs:	1 / fixed
Lubrication:	Grease / Lifetime lubrication



## Tool holder with chip deflector plate...

... transports chips generated during machining directly to the machine extraction system via the deflector plate.

Minimizes chip generation on the workpiece and provides for a dust-reduced and more comfortable work area.

The tool holder is designed individually according to the customer's specifications.



### Technical Specifications

Max. input speed:	15,000 rpm
Max. output speed:	15,000 rpm
Gear ratio:	1 : 1
Max. torque:	20 Nm
Permissible operating temperature:	max. 85°C
Machining angle:	0°
Number of tool outputs:	1 / fixed
Lubrication:	Grease



#### Tool connection:

- ER 25
- ER 32
- ER 40
- Modular interface
- Tool arbor according to customer's specifications
- Other connections on request



#### Machine connection:

ATEMAG aggregates are used on all CNC machines and robot systems. The machine connection is precisely matched to the technical requirements of the CNC machine or robot.



## VERTINEO FUNCTION LINE

All-in-one drilling aggregate for Cabineo connectors. Drilling of three holes in just one work step with a precise and repeatable hole pattern

Machining capabilities: Drilling of Cabineo holes

Typical applications:

- Furniture production

### Technical Specifications

Max. input speed:	6,500 rpm
Max. output speed:	6,500 rpm
Gear ratio:	1 : 1
Max. torque:	3 Nm
Permissible operating temperature:	max. 85°C
Positioning of torque arm with respect to tool:	360°
Machining angle:	0°
Number of tool outputs:	3 / fixed
Lubrication:	Grease / Lifetime lubrication



Tool connection:

- Weldon Ø6 mm

VERTINEO including tools as a system solution:

- Suitable for all common board materials
- Nearly flat hole bottom
- Precutter design for accurate hole drilling



Machine connection:

ATEMAG aggregates are used on all CNC machines and robot systems. The machine connection is precisely matched to the technical requirements of the CNC machine or robot.



## SOFT CUTTER PRO FUNCTION LINE

Aggregate for cutting soft materials such as honeycomb core, acoustic elements, and textiles through the use of oscillating movements

Machining capabilities: Cutting of straight-edged or radius cutouts

Typical applications:

- Textile: Cutting of fabrics or textiles (e.g., leather, felt, etc.)
- Cutting to size of honeycomb cores for doors, stair construction, exhibition stand construction, or recreational vehicle construction
- Acoustic elements: Cutting of polyester, foam, or other sound-absorbing materials
- Aerospace and boat building: Cutting of honeycomb core

### Technical Specifications

Max. input speed:	6,000 rpm
Max. output speed:	9,000 rpm
Gear ratio:	1 : 1.48
Max. torque:	8 Nm
Permissible operating temperature:	max. 85°C
Positioning of torque arm with respect to tool:	360°
Machining angle:	0°
Number of tool outputs:	1 / fixed
Lubrication:	Grease / Lifetime lubrication
Amplitude:	4 mm
Frequency:	150 Hz



Via the oscillating blade movement, either straight or radius cuts are made in soft materials – cutting at an angle is also possible if 5-axis technology is used



Tool connection:  
• Weldon Ø6 mm



Machine connection:  
ATEMAG aggregates are used on all CNC machines and robot systems. The machine connection is precisely matched to the technical requirements of the CNC machine or robot.

## MONO LOW LEVEL FUNCTION LINE

Nesting aggregate for efficient drilling of holes for dowel joints in body elements thanks to especially compact design

Machining capabilities:

Drilling of dowel holes of diameter 6 or 8 mm in boards of thickness 16 mm or greater.

Typical applications: Furniture production on nesting machines.



### Technical Specifications

Max. input speed:	6,800 rpm
Max. output speed:	6,000 rpm
Gear ratio:	1 : 0.88
Max. torque:	1 Nm
Permissible operating temperature:	max. 85°C
Positioning of torque arm with respect to tool:	360°
Machining angle:	90°
Number of tool outputs:	1 / fixed
Lubrication:	Grease / Lifetime lubrication



Tool connection

- M8 with Ø9H5 centering hole



Machine connection:

ATEMAG aggregates are used on all CNC machines and robot systems. The machine connection is precisely matched to the technical requirements of the CNC machine or robot.

## VERTI FUNCTION LINE

Multispindle drilling head for economical drilling of numerous holes or complex hole patterns in just one machining stroke

The design is always application-based. The number of spindles, the grid dimensions, and the spindle arrangement can vary accordingly.

Typical applications:

- Furniture, windows, and doors: Holes for twist handles or hardware in just one step
- Acoustic elements: Economical production due to fewer drilling strokes

### Technical Specifications

Max. input speed:	10,000 rpm
Max. output speed:	10,000 rpm
Gear ratio:	1 : 1
Max. torque:	1 - 5 Nm
Permissible operating temperature:	max. 85°C
Positioning of torque arm with respect to tool:	360°
Machining angle:	0°
Number of tool outputs:	2–49 / fixed
Lubrication:	Grease / Sima Lube



Tool connection:

- Weldon Ø10 mm
- Other connections on request



Machine connection:

ATEMAG aggregates are used on all CNC machines and robot systems. The machine connection is precisely matched to the technical requirements of the CNC machine or robot.

## HORI PRO FUNCTION LINE

Drilling aggregate for economical drilling of corner hinge holes in window construction with a high feed rate of 5 m/min

Typical applications:

Windows: Efficient drilling of holes for corner hinges and dowels



### Technical Specifications

Max. input speed:	5,000 rpm
Max. output speed:	7,500 rpm
Gear ratio:	1 : 1.48
Max. torque:	1 - 20 Nm
Permissible operating temperature:	max. 85°C
Positioning of torque arm with respect to tool:	360°
Machining angle:	90°
Number of tool outputs:	2-10 / fixed
Lubrication:	Grease / Lifetime lubrication



Spindle arrangement and number of spindles according to customer specifications



#### Tool connection:

- Weldon Ø 10 mm
- ER 25
- S1 saw blade flange
- Modular interface
- Other connections on request



#### Machine connection:

ATEMAG aggregates are used on all CNC machines and robot systems. The machine connection is precisely matched to the technical requirements of the CNC machine or robot.



## FRAME AGGREGATE

Angle head for machining of door frames

Hole routing for frame connectors, also known as miter joint connectors, for bracing the individual mitered parts of door frames.



### Technical Specifications

Max. input speed:	15,000 rpm
Max. output speed:	10,000 rpm
Gear ratio:	1 : 0.676
Max. torque:	1.5 Nm
Permissible operating temperature:	max. 85°C
Positioning of torque arm with respect to tool:	360°
Machining angle:	0°
Number of tool outputs:	2 / fixed
Lubrication:	Grease / Lifetime lubrication



## TRIO FUNCTION LINE

DUO FUNCTION LINE with an additional vertical tool output



### Technical Specifications

Max. input speed:	10,000 rpm
Max. output speed:	15,000 rpm
Gear ratio:	1:1.48
Max. torque:	20 Nm
Permissible operating temperature:	max. 85°C
Positioning of torque arm with respect to tool:	360°
Machining angle:	horizontal and vertical
Number of tool outputs:	3 / fixed
Lubrication:	Grease / Lifetime lubrication



## VARIO VISO ULTRA LINE

Digitally adjustable angle head ( $\pm 100^\circ$ ) for heavy-duty machining in miters – fast positioning at  $90^\circ$ ,  $45^\circ$ , and  $0^\circ$

Machining capabilities: Sawing, drilling, routing, planing, and grinding

Typical applications: Furniture industry, exhibition stand construction, and interior build-out:

- Solid wood machining with large saw blade diameter
- Miter cuts at any angle with a swivel range of  $200^\circ$  ( $\pm 100^\circ$ )

### Technical Specifications

Max. input speed: 13,760 rpm

Max. output speed: 15,000 rpm

Gear ratio: 1 : 1.09

Max. torque: 20 Nm

Permissible operating temperature: max.  $85^\circ\text{C}$

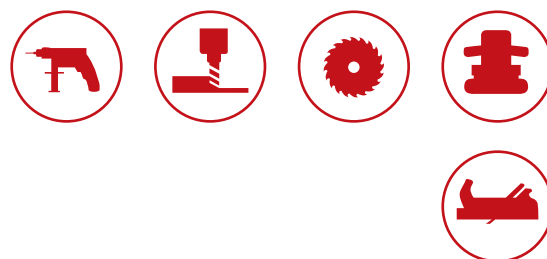
Positioning of torque arm with respect to tool:  $360^\circ$

Machining angle: From  $100^\circ$  to  $-100^\circ$

Angle display: Digital

Number of tool outputs: 1 / variable

Lubrication: Oil / Oil bath lubrication



#### Tool connection

- ER 25 Mini and saw blade flange (K1)
- K2 saw blade flange
- Modular interface
- Other connections on request



#### Machine connection:

ATEMAG aggregates are used on all CNC machines and robot systems. The machine connection is precisely matched to the technical requirements of the CNC machine or robot.

## MONO ULTRA LINE

Aggregate for heavy-duty sawing ideal for large saw blades, roughing cutters, profile cutters, and grinding tools

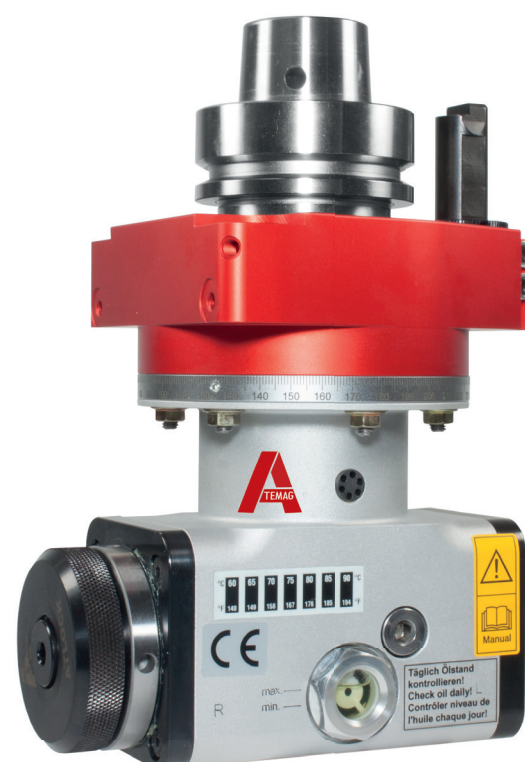
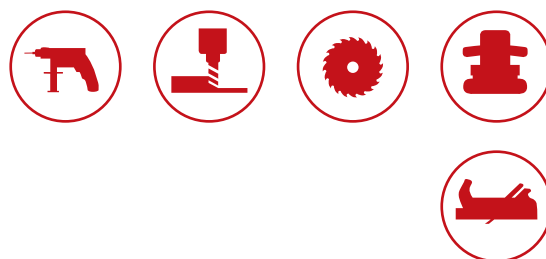
Machining capabilities: Sawing, routing, brushing, planing, and grinding

Typical applications:

- Sawing (formatting) of solid wood, board and mineral materials, composites, aluminum, etc...
- Cut-offs, grooving, profiling, planing, etc.

### Technical Specifications

Max. input speed:	12,000 rpm
Max. output speed:	8,100 rpm
Gear ratio:	1 : 0.676
Max. torque:	22 Nm
Permissible operating temperature:	max. 85°C
Positioning of torque arm with respect to tool:	360°
Machining angle:	90°
Number of tool outputs:	1 / fixed
Lubrication:	Oil / Oil bath lubrication



#### Tool connection

- ATlock
- ER 32
- Modular interface
- S1 saw blade flange
- K2 saw blade flange
- ER 25
- Other connections on request



#### Machine connection:

ATEMAG aggregates are used on all CNC machines and robot systems. The machine connection is precisely matched to the technical requirements of the CNC machine or robot.

## MONO FIX ULTRA LINE 45°

With fixed 45° angle



## MEGA CUTTER ULTRA LINE

Planing shaft aggregate for planing, slotting (sawing), brushing, and grinding

Machining capabilities: Slotting, brushing, planing, and grinding

Typical applications:

- Stair construction: Wire-brush texturing of treads
- Shop fit-out: Slotting with saw package, e.g., curved counter fronts
- Door production: Textured surfaces
- Acoustic elements: Slotting of visible surfaces with saw package, e.g., wall or ceiling elements

### Technical Specifications

Max. input speed: 11,380 rpm

Max. output speed: 7,690 rpm

Gear ratio: 1 : 0.676

Max. torque: 22 Nm

Permissible operating temperature: max. 85°C

Positioning of torque arm with respect to tool: 4 x 90°

Machining angle: 90°

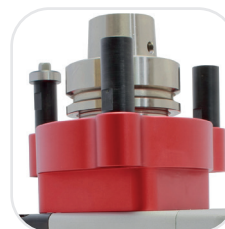
Number of tool outputs: 1 / fixed

Lubrication: Oil / Oil bath lubrication



Tool connection

- Shaft Ø30



Machine connection:

ATEMAG aggregates are used on all CNC machines and robot systems. The machine connection is precisely matched to the technical requirements of the CNC machine or robot.



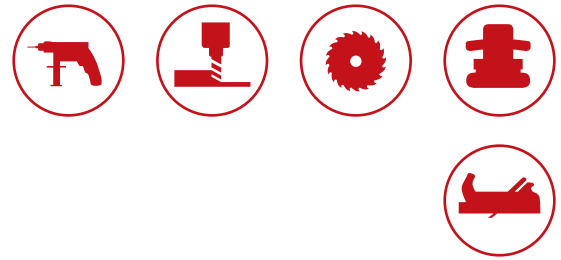
## DUO ULTRA LINE

Aggregate for heavy-duty sawing ideal for large saw blades, roughing cutters, profile cutters, and grinding tools with two tool outputs

Machining capabilities: Sawing, routing, brushing, planing, and grinding

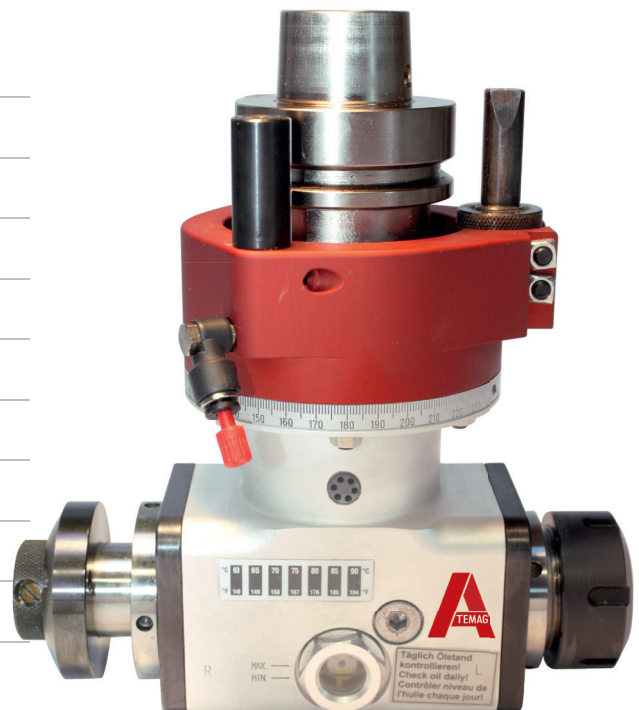
Typical applications:

- Time savings in the process and space savings in the tool changer (even with 5 axes)
- Sawing (forming) of solid wood, board and mineral materials, composites, aluminum, etc...
- Cut-offs, grooving, profiling, planing, etc.



### Technical Specifications

Max. input speed:	12,000 rpm
Max. output speed:	8,100 rpm
Gear ratio:	1 : 0.676
Max. torque:	22 Nm
Permissible operating temperature:	max. 85°C
Positioning of torque arm with respect to tool:	360°
Machining angle:	90°
Number of tool outputs:	2 / fixed
Lubrication:	Oil / Oil bath lubrication



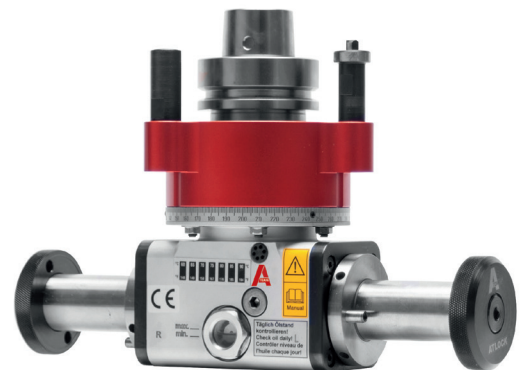
#### Tool connection

- ATlock
- ER 32
- ER 25
- Modular interface
- S1 saw blade flange
- S2 saw blade flange
- Other connections on request



#### Machine connection:

ATEMAG aggregates are used on all CNC machines and robot systems. The machine connection is precisely matched to the technical requirements of the CNC machine or robot.





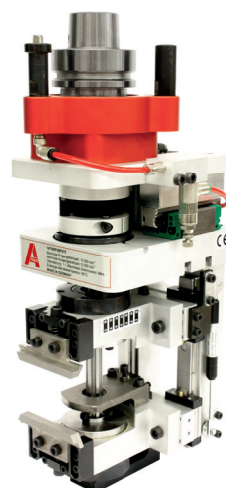
## FLUSH TRIM ROUTING AGGREGATE

Aggregate for routing of glued-on edge banding flush with board with probing function

Board machining: After the edge banding has been glued on, the aggregate routes the protruding part of the edge banding using the integrated probing function so that the banding is flush with the board top and bottom surfaces.

### Technical Specifications

Max. input speed:	10,000 rpm
Max. output speed:	10,000 rpm
Gear ratio:	1 : 1
Max. torque:	6 Nm
Permissible operating temperature:	max. 85°C
Positioning of torque arm with respect to tool:	4 x 90°
Machining angle:	90°
Number of tool outputs:	2 / fixed
Lubrication:	Grease / Lifetime lubrication



## CHISEL MORTISER AGGREGATE

Drilling of square holes through simultaneous drilling and mortising

- Production of square recesses in stair stringers for connecting and positioning treads in stringers
- Notching of internal corners

### Technical Specifications

Max. input speed:	3,000 rpm
Max. output speed:	3,000 rpm
Gear ratio:	1 : 1
Max. torque:	20 Nm
Permissible operating temperature:	max. 85°C
Positioning of torque arm with respect to tool:	3 x 120°
Machining angle:	Horizontal or vertical
Number of tool outputs:	1 / fixed
Lubrication:	Grease / Lifetime lubrication



## CHAINSAW AGGREGATE

Chainsaw aggregate for joinery work on CNC machines

Slotting of glued laminated timber structural elements in wood construction

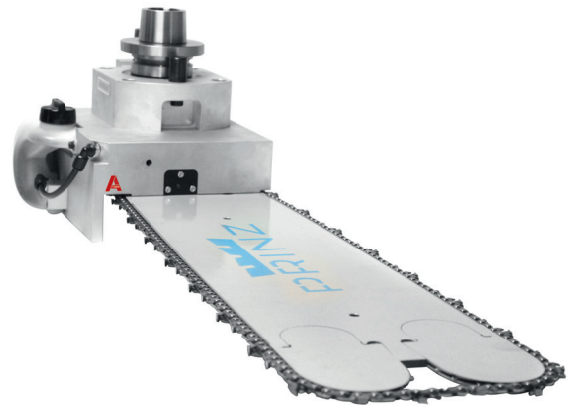
Sawing of cutouts, e.g., windows, doors

The chainsaw unit is sized according to the individual machining task.

Horizontal and vertical machining directions are possible.

### Technical Specifications

Max. input speed:	5,140 rpm
Max. output speed:	5,140 rpm
Gear ratio:	1 : 1
Max. torque:	1.5 Nm
Permissible operating temperature:	max. 85°C
Positioning of torque arm with respect to tool:	360°
Machining angle:	Horizontal or vertical
Number of tool outputs:	1 / fixed
Lubrication:	Grease / Lifetime lubrication
Lubrication of chain:	Oil



## FICHE HINGE AGGREGATE

Aggregate for mortising of slots for fiche hinges

The fiche hinge aggregate is typically used in restoration projects for window installation. Depending on the application, it is oriented vertically or horizontally.

In furniture making, especially in the production of overlay doors, the slots for the frame/body and door leaves of mortise hinges can also be made in an industrial process.

### Technical Specifications

Max. input speed:	4,000 rpm
Max. output speed:	4,000 rpm
Gear ratio:	1 : 1
Blade sizes:	Variable
Permissible operating temperature:	max. 85°C
Positioning of torque arm with respect to tool:	horizontal: 6 x 60° / vertical: 360°
Machining angle:	horizontal and vertical
Number of tool outputs:	1 / fixed
Lubrication:	Grease / Lifetime lubrication



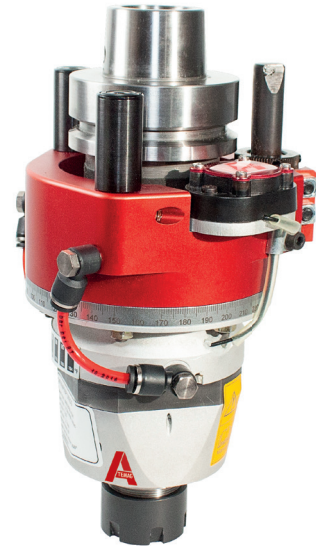
## SPEEDER FUNCTION LINE

High-speed aggregate for small tool diameters

The high-speed aggregate with integrated gearbox allows very high speeds to be reached and is used, for example, for engraving wood or plastics or for processing delicate materials such as leather (tear-free cut). The maximum machine rotational speed is increased by the gearbox.

### Technical Specifications

Max. input speed:	8,000 rpm
Max. output speed:	31,360 rpm
Gear ratio:	1 : 3.92
Max. torque:	2.7 Nm
Permissible operating temperature:	max. 85°C
Positioning of torque arm with respect to tool:	360°
Machining angle:	0°
Number of tool outputs:	1 / fixed
Lubrication:	Grease / Lifetime lubrication



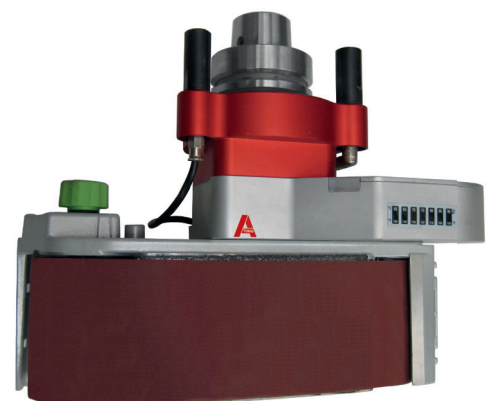
## BELT SANDING AGGREGATE

Efficient sanding of concave, convex, and flat edges.

Fully automated grinding of edges on CNC machines

### Technical Specifications

Max. input speed:	7,560 rpm
Max. output speed:	1,890 rpm
Gear ratio:	4:1
Max. torque:	1 Nm
Permissible operating temperature:	max. 85°C
Positioning of torque arm with respect to tool:	4 x 90°
Machining angle:	Vertical
Number of tool outputs:	1 / fixed
Lubrication:	Grease / Lifetime lubrication



## SCORING AGGREGATE

Trapezoidal blade for cutting of thin soft-core materials

Cutting and scoring of fabrics, leather, and other thin, soft materials

### Technical Specifications

Permissible operating temperature:	max. 85°C
Positioning of torque arm with respect to tool:	4 x 90°
Machining angle:	Vertical Blade angle can be adjusted
Number of tool outputs:	1 / fixed
Lubrication:	Grease / Lifetime lubrication



## ROTARY CUTTER AGGREGATE

Aggregate with rotary blade for cutting a variety of different materials

The rotary cutter aggregate is used, for example, in the packaging industry for cutting and indenting cardboard boxes. It is also ideal for cutting fabrics and leather.

### Technical Specifications

Blade sizes:	Rotary blade
Permissible operating temperature:	max. 85°C
Positioning of torque arm with respect to tool:	4 x 90°
Machining angle:	Vertical
Number of tool outputs:	1 / fixed
Lubrication:	Grease / Lifetime lubrication

